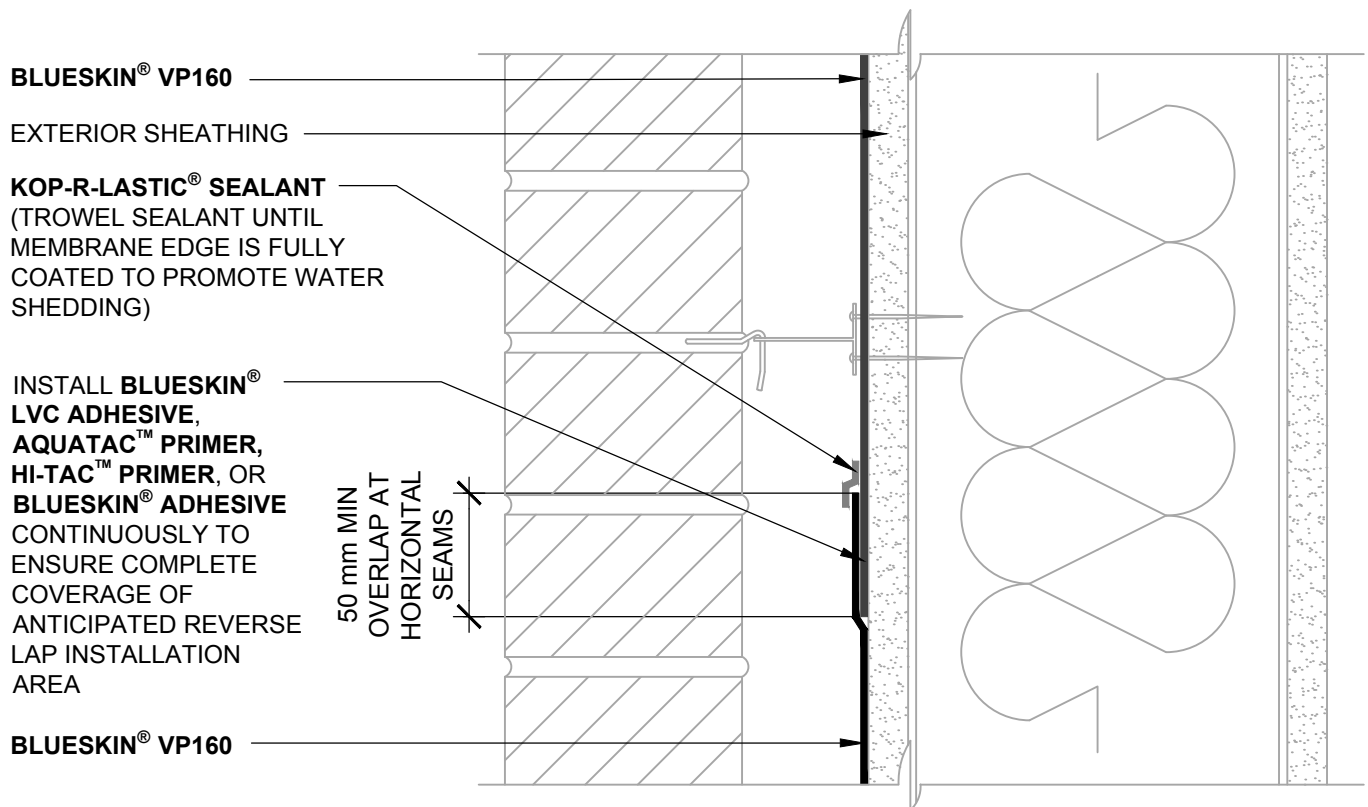


WALL ASSEMBLIES IDENTIFIED AS SPECIAL CONSIDERATIONS AND REQUIRING
 DETAIL CONSIDERATIONS MAY INCLUDE, BUT ARE NOT LIMITED TO, ANY OF THE FOLLOWING:

- PANELLED WALL ASSEMBLIES
- SLOPED WALL ASSEMBLIES
- OPEN RAIN SCREEN CLADDING PERMITTING PERMANENT DIRECT EXPOSURE TO BULK WATER ONTO THE PRIMARY WATER RESISTIVE AIR BARRIER WITHIN A COMPLETED WALL ASSEMBLY.
- CLADDINGS IMPEDING DRAINAGE AND/OR PROMOTING HYDROSTATIC PRESSURE SUCH AS HORIZONTAL Z-GIRTS OR FURRING STRIPS INSTALLED DIRECTLY ONTO AIR BARRIER IN A MANNER TO ENCOURAGE WATER COLLECTION.



NOTES:

1. DETAIL SHOWS **BLUESKIN® VP160** ASSEMBLY INSTALLED OVER EXTERIOR GRADE GYPSUM SHEATHING. OTHER ACCEPTABLE SUBSTRATES INCLUDE PLYWOOD, OSB, CONCRETE, AND CONCRETE BLOCK.
2. PRIME **BLUESKIN® VP160** WHERE SELF-ADHERED FLASHING LAPS ONTO **BLUESKIN® VP160** WHEN ENHANCED SEAM ADHESION IS DESIRED. RECOMMENDED PRIMERS/ADHESIVES INCLUDE: **BLUESKIN® LVC ADHESIVE, AQUATAC™ PRIMER, HI-TAC™ PRIMER, OR BLUESKIN® ADHESIVE.**
3. THE **BLUESKIN® VP160** ASSEMBLY SHALL BE INSTALLED TO PROVIDE A CONTINUOUS BARRIER TO PREVENT AIR AND WATER INTRUSION.
4. REFER TO **BLUESKIN® VP160** INSTALLATION GUIDELINES FOR RECOMMENDED INSTALLATION PROCEDURES.

Henry®

15 Wallsend Drive,
 Scarborough, Ontario, M1E 3X6
 800-486-1278 • www.henry.com

MANUFACTURER GUIDE DETAILS ARE FOR REFERENCE ONLY. HENRY® DOES NOT ASSUME RESPONSIBILITY FOR ERRORS OR DEVIATIONS IN DESIGN OR ENGINEERING. PROJECT SPECIFIC VERIFICATION IS RECOMMENDED PRIOR TO INSTALLATION.

BLUESKIN® VP160 SELF-ADHERED WATER RESISTIVE AIR BARRIER

REVERSE LAP

SPECIAL CONSIDERATIONS

BLUESKIN® VP160 LAPPING ONTO **BLUESKIN® VP160**

SCALE: N.T.S.

09-29-2016

BSVP160 - 7D